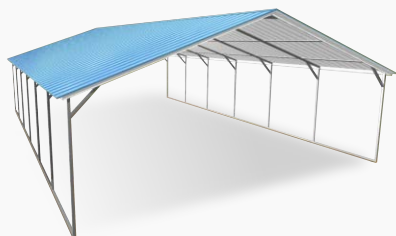


Carport Prices Certified for 150 mph and 35 psf

AL, AR, GA, KY, KS, LA, MO, MS, NC, OK, SC, TN, TX, VA, WV

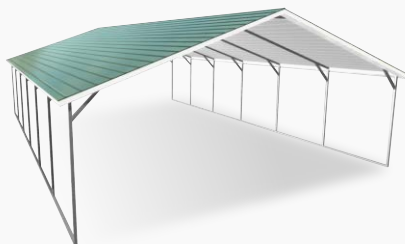
Prices subject to change without notice

Vertical Roof



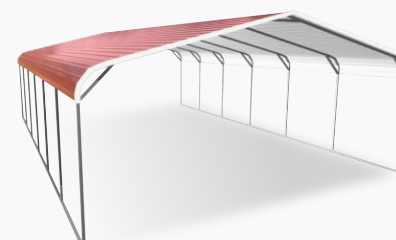
Standard Heights 6'-16'

Boxed Eave Roof



Standard Heights 6'-16'

Regular Roof



Standard Heights 6'-16'

12x20	18x20	20x20	22x20	24x20
\$1,695	\$1,795	\$1,995	\$2,395	\$2,495
12x25	18x25	20x25	22x25	24x25
\$2,095	\$2,195	\$2,495	\$2,995	\$3,095
12x30	18x30	20x30	22x30	24x30
\$2,495	\$2,695	\$3,095	\$3,595	\$3,795
12x35	18x35	20x35	22x35	24x35
\$2,895	\$3,095	\$3,595	\$4,195	\$4,395
12x40	18x40	20x40	22x40	24x40
\$3,395	\$3,595	\$4,095	\$4,795	\$4,995
12x45	18x45	20x45	22x45	24x45
\$3,790	\$3,990	\$4,490	\$5,390	\$5,590
12x50	18x50	20x50	22x50	24x50
\$4,190	\$4,390	\$4,990	\$5,990	\$6,190

12x20	18x20	20x20	22x20	24x20
\$1,395	\$1,595	\$1,795	\$1,995	\$2,295
12x25	18x25	20x25	22x25	24x25
\$1,795	\$1,895	\$2,195	\$2,495	\$2,795
12x30	18x30	20x30	22x30	24x30
\$2,195	\$2,295	\$2,695	\$3,095	\$3,395
12x35	18x35	20x35	22x35	24x35
\$2,495	\$2,695	\$3,095	\$3,595	\$3,995

12x20	18x20	20x20	22x20	24x20
\$1,295	\$1,395	\$1,695	\$1,895	\$1,995
12x25	18x25	20x25	22x25	24x25
\$1,595	\$1,695	\$1,995	\$2,295	\$2,495
12x30	18x30	20x30	22x30	24x30
\$1,795	\$1,895	\$2,395	\$2,695	\$2,995
12x35	18x35	20x35	22x35	24x35
\$1,995	\$2,195	\$2,795	\$3,095	\$3,395

Buildings over 35 feet long must be vertical roof style.

Roof Length is 1 ft. Longer than Frame Length

✂ 1 Year Workmanship Warranty (Limited)

⚙ 10-Year Rust-Through Warranty on 14 GA, 2 1/2" Framing

20 YEAR

Limited Rust Through Warranty on:

✓ Vertical roof panels only (up to any length)

All buildings include:

- ✓ 29 Gauge Roofing
- ✓ 4' Braces on Every Leg 8' or Taller
- ✓ Anchors included
- ✓ 5' Centers

Free color selection for roof, trim, and siding (if selected)



King Blue



Cardinal Red



True Burgundy



White



Clay



Black



Earth Brown



Tan



Pewter Gray



Sandstone



Barn Red



Pebble Beige



Slate Blue



Evergreen



Quaker Gray

✓ Footer requirements vary by local codes. Check before installation.

✓ Lot must be cleared and leveled prior to installation.

✓ Price does not include site preparation.



We accept all major credit cards

Free Installation on your level lot

1 Year Workmanship Warranty

All prices are subject to change without notice.

1-800-488-6903

alansfactoryoutlet.com

Metal Carport Prices

OPTIONS, ACCESSORIES AND EXTRAS

OPTIONS		20' LONG	25' LONG	30' LONG	35' LONG	40' LONG
12G		\$210	\$240	\$270	\$300	\$330
J-Trim		60	70	85	95	110

SIDE HEIGHT	HEIGHT (TALL)	20' L	25' L	30' L	35' L	40' L
	7'	\$70	\$90	\$110	\$125	\$145
	8'	\$145	\$215	\$275	\$335	\$395
	9'	\$215	\$305	\$385	\$460	\$540
	10'	\$290	\$395	\$490	\$590	\$685
	11'	\$360	\$485	\$600	\$715	\$830
	12'	\$430	\$575	\$710	\$840	\$970
	*13'	\$625	\$815	\$995	\$1,175	\$1,355
	*14'	\$695	\$905	\$1,105	\$1,300	\$1,500
	**15'	\$1,775	\$2,230	\$2,665	\$3,095	\$3,530
	**16'	\$2,015	\$2,470	\$2,905	\$3,335	\$3,770

*Single Leg, Single Base Rail, Reinforced **Double Leg, Double Base Rail

CLOSE BOTH SIDES	HEIGHT (TALL)	20' L	25' L	30' L	35' L	40' L
	6'	\$440	\$520	\$620	\$700	\$860
	7'	\$550	\$650	\$775	\$875	\$1,075
	8' - 9'	\$660	\$780	\$930	\$1,050	\$1,290
	10'	\$770	\$910	\$1,085	\$1,225	\$1,505
	11' - 12'	\$880	\$1,040	\$1,240	\$1,400	\$1,720
	13'	\$990	\$1,170	\$1,395	\$1,575	\$1,935
	14' - 15'	\$1,100	\$1,300	\$1,550	\$1,750	\$2,150
VERT. SIDES <i>(Both Sides)</i>	16'	\$1,210	\$1,430	\$1,705	\$1,925	\$2,365
	6' - 10'	\$360	\$420	\$480	\$540	\$600
	11' - 15'	\$480	\$570	\$660	\$750	\$840
VERT. TWO TONE <i>(Both Sides)</i>		\$300	\$350	\$400	\$450	\$500

EACH END CLOSED	HEIGHT (TALL)	12' W	18' W	20' W	22' W	24' W
	6'	\$540	\$650	\$755	\$865	\$970
	7'	\$640	\$725	\$840	\$960	\$1,075
	8' - 9'	\$685	\$815	\$940	\$1,075	\$1,200
	10'	\$830	\$980	\$1,130	\$1,285	\$1,435
	11' - 12'	\$1,010	\$1,200	\$1,400	\$1,590	\$1,790
	13'	\$1,150	\$1,370	\$1,585	\$1,800	\$2,015
	14' - 15'	\$1,370	\$1,625	\$1,885	\$2,150	\$2,405
VERT. END <i>Per End</i>	16'	\$1,475	\$1,760	\$2,040	\$2,315	\$2,600
	VERT. END <i>Per End</i>	\$150	\$270	\$300	\$330	\$360
VERT. TWO TONE <i>Per End</i>		\$200	\$250	\$300	\$350	\$400

White Only

UNCERTIFIED

CERTIFIED

\$500

6' x 6'

\$750

\$600

8' x 8'

\$800

\$650

9' x 8'

\$850

\$700

10' x 8'

\$950

\$800

10' x 10'

\$1,050

\$1400

*12' x 12'

\$1,900

\$2100

*14' x 14'

\$2,500

\$2500

*16' x 16'

\$2,700

P. Grey

Green

E. Brown

Barn Red

Beige

And More**

UNCERTIFIED

CERTIFIED

\$600

6' x 6'

\$850

\$700

8' x 8'

\$900

\$750

9' x 8'

\$950

\$800

10' x 8'

\$1,050

\$900

10' x 10'

\$1,150

\$1500

*12' x 12'

\$2,000

\$2200

*14' x 14'

\$2,600

\$2600

*16' x 16'

\$2,800

*Chain Hoist Included In Price. **Color prices may vary.

FRAMEOUTS	
45° Angle	\$85
<i>(Plus Frameout Charge)</i>	
Garage Door	\$150
Window	\$75
Walk-In Door	\$90

INSULATION	
Double Bubble	\$1.50/sqft
Woven R-17*	\$3.00/sqft

*CCI Exclusive product

GABLE END	
Certified	\$225
Vertical Gable Add	\$50

COLORED SCREWS	
Add 3% of Retail Cost Of Building	

CHAIN HOIST	
\$325 Each	

SIDE OPENINGS	
<i>With Garage Door</i>	
6' - 10'	\$150
12' W	\$200
14' W	\$250
16' W	\$300

SIDE OPENINGS	
<i>Without Garage Door</i>	
6' - 10'	\$250
12' W	\$300
14' W	\$350
16' W	\$400
18' W	\$450
20' W	\$500

CUT PANEL	
21' L	\$50
26' L	\$60
31' L	\$70
36' L	\$80

CONNECTION FEES		
Side to Side	21' L	Start at \$100
Add \$25 For Each Additional 5' in Length		

WALK-IN DOORS 36" x 80"			
Fiberglass Door	\$300	6 Panel Steel Door	\$800





1/2 PANEL W/ TRIM	
21' L	\$220
26' L	\$260
31' L	\$310
36' L	\$350

PANELS 3'	
21' L	\$110
26' L	\$130
31' L	\$155
36' L	\$175

WINDOWS	
30" x 30"	30" x 36"
\$200	\$225





\$250 \$275





Fully Enclosed Garages Certified for 150 mph and 35 psf

AL, AR, GA, KY, KS, LA, MO, MS, NC, OK, SC, TN, TX, VA, WV

Prices subject to change without notice

Vertical Roof



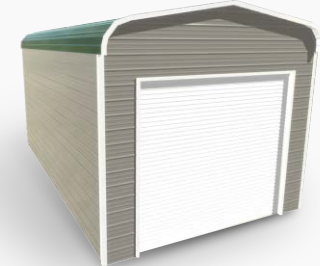
Includes 6" overhang on all sides

Boxed Eave Roof



Includes 6" overhang on all sides

Regular Roof



12x20	18x20	20x20	22x20	24x20
\$3,940	\$4,300	\$4,750	\$5,420	\$5,770
12x25	18x25	20x25	22x25	24x25
\$4,550	\$4,910	\$5,460	\$6,230	\$6,580
12x30	18x30	20x30	22x30	24x30
\$5,180	\$5,640	\$6,290	\$7,060	\$7,510
12x35	18x35	20x35	22x35	24x35
\$5,775	\$6,235	\$6,985	\$7,855	\$8,305
12x40	18x40	20x40	22x40	24x40
\$6,595	\$7,055	\$7,805	\$8,775	\$9,225

12x20	18x20	20x20	22x20	24x20
\$3,640	\$4,100	\$4,550	\$5,020	\$5,570
12x25	18x25	20x25	22x25	24x25
\$4,250	\$4,610	\$5,160	\$5,730	\$6,280
12x30	18x30	20x30	22x30	24x30
\$4,880	\$5,240	\$5,890	\$6,560	\$7,110
12x35	18x35	20x35	22x35	24x35
\$5,375	\$5,835	\$6,485	\$7,255	\$7,905

12x20	18x20	20x20	22x20	24x20
\$3,540	\$3,900	\$4,450	\$4,920	\$5,270
12x25	18x25	20x25	22x25	24x25
\$4,050	\$4,410	\$4,960	\$5,530	\$5,980
12x30	18x30	20x30	22x30	24x30
\$4,480	\$4,840	\$5,590	\$6,160	\$6,710
12x35	18x35	20x35	22x35	24x35
\$4,875	\$5,335	\$6,185	\$6,755	\$7,305

Buildings over 35 feet long must be vertical roof style.

** All prices are for a fully enclosed, 9' tall, with no garage doors, walk in doors, or windows.*

Sizes range from: 12' Wide – 24' Wide; 9' Standard Side Height, option to increase up to 16' tall.

All buildings include:

- ✓ 29 Gauge Sheet Metal
- ✓ 4' Braces on Every Leg 8' or Taller
- ✓ Anchors included
- ✓ 5' Centers

Roof Length is 1 ft. Longer than Frame Length

✂ 1 Year Workmanship Warranty (Limited)

⚙ 10-Year Rust-Through Warranty on 14 GA, 2 1/2" Framing

20 YEAR

Limited Rust Through Warranty on:

- ✓ Vertical roof panels only (up to any length)

Free color selection for roof, trim, and siding (if selected)



King Blue



Cardinal Red



True Burgundy



White



Clay



Black



Earth Brown



Tan



Pewter Gray



Sandstone



Barn Red



Pebble Beige



Slate Blue



Evergreen



Quaker Gray

✓ Footer requirements vary by local codes. Check before installation.

✓ Lot must be cleared and leveled prior to installation.

✓ Price does not include site preparation.



We accept all major credit cards

Free Installation on your level lot

1 Year Workmanship Warranty

All prices are subject to change without notice.

1-800-488-6903

alansfactoryoutlet.com

Metal Garage Prices

OPTIONS, ACCESSORIES AND EXTRAS

Below prices include the cost to make the entire garage taller
(including taller side/end paneling & leg height)

12' W Garage	20' L	25' L	30' L	35' L	40' L
Increase to: 10' Tall Sides	\$475	\$510	\$550	\$595	\$650
Increase to: 11' Tall Sides	\$1,015	\$1,090	\$1,175	\$1,255	\$1,370
Increase to: 12' Tall Sides	\$1,085	\$1,180	\$1,280	\$1,380	\$1,510
Increase to: 13' Tall Sides	\$1,670	\$1,830	\$2,005	\$2,170	\$2,390
Increase to: 14' Tall Sides	\$2,290	\$2,490	\$2,710	\$2,910	\$3,190
Increase to: 15' Tall Sides	\$3,370	\$3,815	\$4,270	\$4,705	\$5,220
Increase to: 16' Tall Sides	\$3,930	\$4,395	\$4,875	\$5,330	\$5,885

20' W Garage	20' L	25' L	30' L	35' L	40' L
Increase to: 10' Tall Sides	\$565	\$600	\$640	\$685	\$740
Increase to: 11' Tall Sides	\$1,285	\$1,360	\$1,445	\$1,525	\$1,640
Increase to: 12' Tall Sides	\$1,355	\$1,450	\$1,555	\$1,650	\$1,780
Increase to: 13' Tall Sides	\$2,030	\$2,190	\$2,365	\$2,530	\$2,750
Increase to: 14' Tall Sides	\$2,810	\$3,010	\$3,230	\$3,430	\$3,710
Increase to: 15' Tall Sides	\$3,890	\$4,335	\$4,790	\$5,225	\$5,740
Increase to: 16' Tall Sides	\$4,550	\$5,015	\$5,495	\$5,950	\$6505

24' W Garage	20' L	25' L	30' L	35' L	40' L
Increase to: 10' Tall Sides	\$655	\$690	\$730	\$775	\$830
Increase to: 11' Tall Sides	\$1,545	\$1,620	\$1,705	\$1,785	\$1,900
Increase to: 12' Tall Sides	\$1,615	\$1,710	\$1,815	\$1,910	\$2,040
Increase to: 13' Tall Sides	\$2,370	\$2,530	\$2,705	\$2,870	\$3,090
Increase to: 14' Tall Sides	\$3,330	\$3,530	\$3,750	\$3,950	\$4,230
Increase to: 15' Tall Sides	\$4,410	\$4,855	\$5,310	\$5,745	\$6,260
Increase to: 16' Tall Sides	\$5,150	\$5,615	\$6,095	\$6,550	\$7,105

Option, Based on Length	20' L	25' L	30' L	35' L	40' L
12 GA Framing Upgrade	\$210	\$240	\$270	\$300	\$330
Vertical Siding, Both Sides, 9'-10' Tall	\$360	\$420	\$480	\$540	\$600
Vertical Siding, Both Sides, 11'-15' Tall	\$480	\$570	\$660	\$750	\$840
Vertical Siding, Both Sides, 16' Tall	\$600	\$720	\$840	\$960	\$1,080
Vertical Two-Toned, Both Sides	\$300	\$350	\$400	\$450	\$500
Option, Based on Width	12' W	18' W	20' W	22' W	24' W
Vertical Siding, Both Ends	\$300	\$540	\$600	\$660	\$720
Vertical Two-Toned Both Ends	\$400	\$500	\$600	\$700	\$800

CONNECTION FEES			COLORED SCREWS		INSULATION	
Side to Side	21' L	Start at \$100	Add 3% of Retail Cost Of Building		Double Bubble	\$1.50/sqft
Add \$25 For Each Additional 5' in Length			CHAIN HOIST		Woven R-17*	\$3.00/sqft
			\$325 Each		*CCI Exclusive product	

18' W Garage	20' L	25' L	30' L	35' L	40' L
Increase to: 10' Tall Sides	\$515	\$550	\$590	\$635	\$690
Increase to: 11' Tall Sides	\$1,135	\$1,210	\$1,295	\$1,375	\$1,490
Increase to: 12' Tall Sides	\$1,205	\$1,300	\$1,405	\$1,500	\$1,630
Increase to: 13' Tall Sides	\$1,850	\$2,010	\$2,185	\$2,350	\$2,570
Increase to: 14' Tall Sides	\$2,540	\$2,740	\$2,960	\$3,160	\$3,440
Increase to: 15' Tall Sides	\$3,620	\$4,065	\$4,520	\$4,955	\$5,470
Increase to: 16' Tall Sides	\$4,240	\$4,705	\$5,185	\$5,640	\$6,195

22' W Garage	20' L	25' L	30' L	35' L	40' L
Increase to: 10' Tall Sides	\$605	\$640	\$680	\$725	\$780
Increase to: 11' Tall Sides	\$1,395	\$1,470	\$1,555	\$1,635	\$1,750
Increase to: 12' Tall Sides	\$1,465	\$1,560	\$1,665	\$1,760	\$1,890
Increase to: 13' Tall Sides	\$2,190	\$2,350	\$2,525	\$2,690	\$2,910
Increase to: 14' Tall Sides	\$3,070	\$3,270	\$3,490	\$3,690	\$3,970
Increase to: 15' Tall Sides	\$4,150	\$4,595	\$5,050	\$5,485	\$6,000
Increase to: 16' Tall Sides	\$4,830	\$5,295	\$5,775	\$6,230	\$6,785

White Only		
UNCERTIFIED	CERTIFIED	
\$500	6' x 6'	\$750
\$600	8' x 8'	\$800
\$650	9' x 8'	\$850
\$700	10' x 8'	\$950
\$800	10' x 10'	\$1,050
\$1,400	*12' x 12'	\$1,900
\$2,100	*14' x 14'	\$2,500
\$2,000	*16' x 8'	\$2,300
\$2,500	*16' x 16'	\$2,700

Colored		
UNCERTIFIED	CERTIFIED	
\$600	6' x 6'	\$850
\$700	8' x 8'	\$900
\$750	9' x 7'	\$950
\$750	9' x 8'	\$950
\$800	10' x 8'	\$1,050
\$900	10' x 10'	\$1,150
\$1500	*12' x 12'	\$2,000
\$2200	*14' x 14'	\$2,600
\$2100	*16' x 8'	\$2,400
\$2600	*16' x 16'	\$2,800

SIDE OPENINGS	
With Garage Door	
6' - 10'	\$150
12' W	\$200
14' W	\$250
16' W	\$300

SIDE OPENINGS	
Without Garage Door	
6' - 10'	\$250
12' W	\$300
14' W	\$350
16' W	\$400
18' W	\$450
20' W	\$500

*Colored Garage Doors only available in Pewter Gray, Evergreen, Earth Brown, Barn Red, Pebble Beige and more.

(*)Indicates a Chain Hoist is included with garage door. {All other sizes can have a chain hoist added for an additional fee}

FRAMEOUTS




45° Angle	\$85
-----------	------

(Plus Frameout Charge)

Garage Door	\$150
Window	\$75
Walk-In Door	\$90





WALK-IN DOORS 36" x 80"

Fiberglass Door \$300	6 Steel Panel \$800
-----------------------	---------------------



WINDOWS

30" x 30"		30" x 36"	
\$200	\$250	\$225	\$275



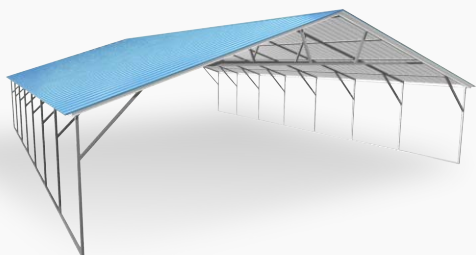
Triple Wide Carport

Certified for 150 mph and 35 psf

AL, AR, GA, IN, KY, KS, LA, MD, MO, MS, NC, OH, OK, PA, SC, TN, TX, VA, WV

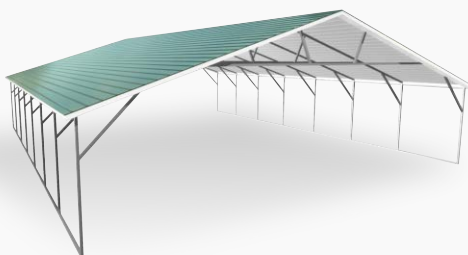
Prices subject to change without notice

Vertical Roof



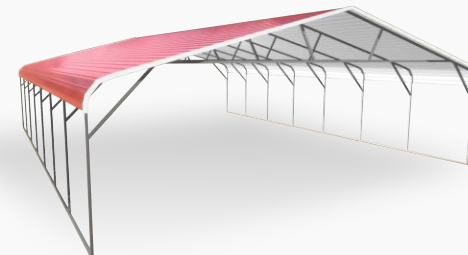
Standard Heights 6'-16'

Boxed Eave Roof



Standard Heights 6'-16'

Regular Roof



Standard Heights 6'-16'

26x20	28x20	30x20
\$3,195	\$3,395	\$3,495
26x25	28x25	30x25
\$3,995	\$4,195	\$4,295
26x30	28x30	30x30
\$4,895	\$4,995	\$5,195
26x35	28x35	30x35
\$5,695	\$5,895	\$6,095
26x40	28x40	30x40
\$6,495	\$6,695	\$6,995
26x45	28x45	30x45
\$7,190	\$7,590	\$7,790
26x50	28x50	30x50
\$7,990	\$8,390	\$8,590

26x20	28x20	30x20
\$2,895	\$2,995	\$3,095
26x25	28x25	30x25
\$3,595	\$3,695	\$3,895
26x30	28x30	30x30
\$4,295	\$4,495	\$4,695
26x35	28x35	30x35
\$4,995	\$5,195	\$5,495

26x20	28x20	30x20
\$2,795	\$2,895	\$2,995
26x25	28x25	30x25
\$3,395	\$3,595	\$3,695
26x30	28x30	30x30
\$4,095	\$4,295	\$4,495
26x35	28x35	30x35
\$4,795	\$4,995	\$5,195

Buildings over 35 feet long must be vertical roof style.

Roof Length is 1 ft. Longer than Frame Length

✂ 1 Year Workmanship Warranty (Limited)

⚙ 10-Year Rust-Through Warranty on 14 GA, 2 1/2" Framing

20 YEAR

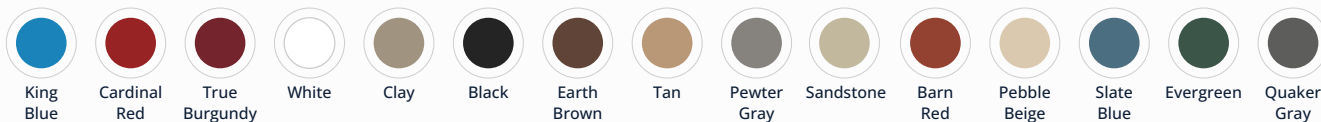
Limited Rust Through Warranty on:

✓ Vertical roof panels only (up to any length)

All buildings include:

- ✓ 29 Gauge Roofing
- ✓ Braces on Every Leg
- ✓ Anchors included
- ✓ 5' Centers
- ✓ Welded Center Truss

Free color selection for roof, trim, and siding (if selected)



**15' - 16' Ht
REQUIRES A
TELESCOPIC
FORKLIFT**

✓ Footer requirements vary by local codes. Check before installation.

✓ Lot must be cleared and leveled prior to installation.

✓ Price does not include site preparation.



We accept all
major credit cards

Free Installation
on your level lot

1 Year
Workmanship Warranty

All prices are subject to change without notice.

1-800-488-6903

alansfactoryoutlet.com

Triple Wide Carport Prices

OPTIONS, ACCESSORIES AND EXTRAS

OPTIONS	20' LONG	25' LONG	30' LONG	35' LONG	40' LONG
12G	\$360	\$480	\$600	\$720	\$840
J-Trim	60	70	85	95	110

SIDE HEIGHT	HEIGHT (TALL)	20' L	25' L	30' L	35' L	40' L
	7'	\$110	\$130	\$155	\$180	\$205
	8'	\$215	\$265	\$310	\$360	\$410
	9'	\$325	\$395	\$470	\$540	\$610
	10'	\$430	\$530	\$625	\$720	\$815
	11'	\$540	\$660	\$780	\$900	\$1,020
	12'	\$840	\$995	\$1,140	\$1,295	\$1,440
	*13'	\$1,190	\$1,370	\$1,775	\$1,955	\$2,245
	*14'	\$1,295	\$1,500	\$1,930	\$2,135	\$2,450
	**15'	\$1,920	\$2,280	\$2,640	\$3,120	\$3,600
	**16'	\$2,160	\$2,520	\$2,880	\$3,360	\$3,840

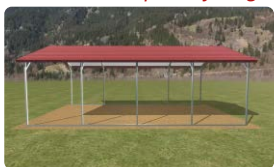
*Single Leg, Single Base Rail, Reinforced

**Double Leg, Double Base Rail

BOTH SIDES CLOSED	HEIGHT (TALL)	20' L	25' L	30' L	35' L	40' L
	6'	\$440	\$520	\$620	\$700	\$860
	7'	\$550	\$650	\$775	\$875	\$1,075
	8' - 9'	\$660	\$780	\$930	\$1,050	\$1,290
	10'	\$770	\$910	\$1,085	\$1,225	\$1,505
	11' - 12'	\$880	\$1,040	\$1,240	\$1,400	\$1,720
	13'	\$990	\$1,170	\$1,395	\$1,575	\$1,935
	14' - 15'	\$1,100	\$1,300	\$1,550	\$1,750	\$2,150
	16'	\$1,210	\$1,430	\$1,705	\$1,925	\$2,365
VERT. SIDES (Both Sides)	6' - 10'	\$360	\$420	\$480	\$540	\$600
	11' - 15'	\$480	\$570	\$660	\$750	\$840
	16'	\$600	\$720	\$840	\$960	\$1,080
VERT. TWO TONE (Both Sides)		\$300	\$350	\$400	\$450	\$500

EACH END CLOSED	HEIGHT (TALL)	26' W	28' W	30' W
	6'	\$1,250	\$1,390	\$1,530
	7'	\$1,350	\$1,500	\$1,645
	8' - 9'	\$1,555	\$1,715	\$1,870
	10'	\$1,655	\$1,825	\$1,985
	11' - 12'	\$1,860	\$2,040	\$2,215
	13'	\$1,960	\$2,150	\$2,330
	14' - 15'	\$2,165	\$2,365	\$2,555
	16'	\$2,270	\$2,470	\$2,670
VERT. END Per End		\$450	\$510	\$570
VERT. TWO TONE Per End		\$450	\$500	\$550

Side View Up to Any Length



Front View 26' to 30' W



White Only	UNCERTIFIED		CERTIFIED		<div>P. Grey</div> <div>Green</div> <div>E. Brown</div> <div>Barn Red</div> <div>Beige</div> <div>And More**</div>	UNCERTIFIED		CERTIFIED	
	\$500	6' x 6'	\$750			\$600	6' x 6'	\$850	
	\$600	8' x 8'	\$800			\$700	8' x 8'	\$900	
	\$650	9' x 8'	\$850			\$750	9' x 8'	\$950	
	\$700	10' x 8'	\$950			\$800	10' x 8'	\$1,050	
	\$800	10' x 10'	\$1,050			\$900	10' x 10'	\$1,150	
	\$1400	*12' x 12'	\$1,900			\$1500	*12' x 12'	\$2,000	
	\$2100	*14' x 14'	\$2,500			\$2200	*14' x 14'	\$2,600	
	\$2500	*16' x 16'	\$2,700			\$2600	*16' x 16'	\$2,800	

*Chain Hoist Included In Price. **Color prices may vary.

CONNECTION FEES		
Side to Side	21' L	Start at \$100
Add \$25 For Each Additional 5' in Length		

INSULATION	
Double Bubble	\$1.50/sqft
Woven R-17*	\$3.00/sqft

*CCI Exclusive product

1/2 PANEL W/ TRIM	
21' L	\$220
26' L	\$260
31' L	\$310
36' L	\$350

GABLE END	
Certified	\$300
Vertical Gable Add	\$85

COLORED SCREWS	
Add 3% of Retail Cost Of Building	

FRAMEOUTS	
45° Angle	\$85
(Plus Frameout Charge)	
Garage Door	\$150
Window	\$75
Walk-In Door	\$90

SIDE OPENINGS	
With Garage Door	
6' - 10'	\$150
12' W	\$200
14' W	\$250
16' W	\$300

SIDE OPENINGS	
Without Garage Door	
6' - 10'	\$250
12' W	\$300
14' W	\$350
16' W	\$400
18' W	\$450
20' W	\$500

WALK-IN DOORS 36" x 80"		
Fiberglass Door	\$300	6 Panel Steel Door \$800

CHAIN HOIST	
\$325 Each	

CUT PANEL	
21' L	\$50
26' L	\$60
31' L	\$70
36' L	\$80

PANELS 3'	
21' L	\$110
26' L	\$130
31' L	\$155
36' L	\$175

WINDOWS	
30" x 30"	30" x 36"
\$200	\$225

\$250	\$275

--	--

All prices are subject to change without notice.

1-800-488-6903

alansfactoryoutlet.com

32' to 60' Wide Metal Building

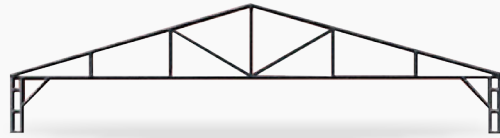
Certified for 150 mph and 35 psf

AL, AR, GA, IN, KY, KS, LA, MD, MO, MS, NC, OH, OK, PA, SC, TN, TX, VA, WV

Prices subject to change without notice

32' to 40' Wide

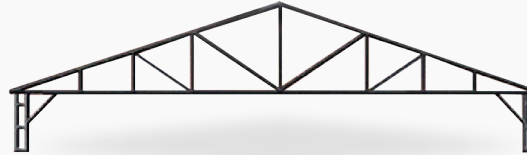
8' to 20' Tall



32x20	34x20	36x20	38x20	40x20
\$6,795	\$7,195	\$7,695	\$8,195	\$8,795
32x24	34x24	36x24	38x24	40x24
\$7,995	\$8,495	\$8,895	\$9,395	\$9,995
32x28	34x28	36x28	38x28	40x28
\$9,195	\$9,695	\$10,195	\$10,695	\$11,295
32x32	34x32	36x32	38x32	40x32
\$10,395	\$10,995	\$11,495	\$11,895	\$12,495
32x36	34x36	36x36	38x36	40x36
\$11,595	\$12,195	\$12,695	\$13,195	\$13,795
32x40	34x40	36x40	38x40	40x40
\$12,795	\$13,495	\$13,995	\$14,495	\$15,095
32x44	34x44	36x44	38x44	40x44
\$13,995	\$14,795	\$15,195	\$15,695	\$16,295
32x48	34x48	36x48	38x48	40x48
\$15,195	\$15,995	\$16,495	\$16,995	\$17,595
32x52	34x52	36x52	38x52	40x52
\$16,395	\$17,295	\$17,795	\$18,195	\$18,795

42' to 50' Wide

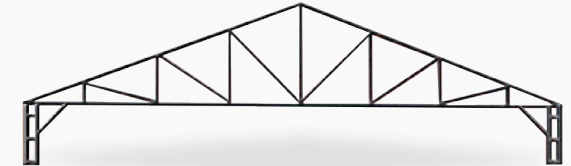
8' to 20' Tall



42x20	44x20	46x20	48x20	50x20
\$9,095	\$9,595	\$10,195	\$10,795	\$11,495
42x24	44x24	46x24	48x24	50x24
\$10,395	\$10,895	\$11,495	\$12,095	\$12,795
42x28	44x28	46x28	48x28	50x28
\$11,595	\$12,095	\$12,695	\$13,395	\$14,195
42x32	44x32	46x32	48x32	50x32
\$12,895	\$13,395	\$13,995	\$14,795	\$15,495
42x36	44x36	46x36	48x36	50x36
\$14,195	\$14,595	\$15,195	\$16,095	\$16,795
42x40	44x40	46x40	48x40	50x40
\$15,395	\$15,895	\$16,495	\$17,395	\$18,095
42x44	44x44	46x44	48x44	50x44
\$16,695	\$17,195	\$17,795	\$18,695	\$19,395
42x48	44x48	46x48	48x48	50x48
\$17,895	\$18,395	\$18,995	\$19,995	\$20,795
42x52	44x52	46x52	48x52	50x52
\$19,195	\$19,695	\$20,295	\$21,395	\$22,095

52' to 60' Wide

8' to 20' Tall

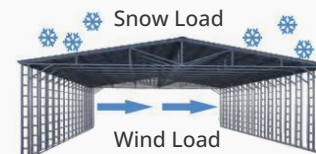


52x20	54x20	56x20	58x20	60x20
\$11,995	\$12,795	\$13,595	\$14,295	\$14,995
52x24	54x24	56x24	58x24	60x24
\$13,295	\$14,195	\$14,895	\$15,595	\$16,295
52x28	54x28	56x28	58x28	60x28
\$14,595	\$15,495	\$16,195	\$16,895	\$17,595
52x32	54x32	56x32	58x32	60x32
\$15,995	\$16,795	\$17,495	\$18,195	\$18,995
52x36	54x36	56x36	58x36	60x36
\$17,295	\$18,095	\$18,795	\$19,595	\$20,295
52x40	54x40	56x40	58x40	60x40
\$18,595	\$19,395	\$20,195	\$20,895	\$21,595
52x44	54x44	56x44	58x44	60x44
\$19,895	\$20,795	\$21,495	\$22,195	\$22,895
52x48	54x48	56x48	58x48	60x48
\$21,195	\$22,095	\$22,795	\$23,495	\$24,195
52x52	54x52	56x52	58x52	60x52
\$22,595	\$23,395	\$24,095	\$24,795	\$25,595

Price Includes:

- ✓ Vertical Siding Panels
- ✓ 29 Gauge Roofing
- ✓ 14 Gauge Framing
- ✓ Welded Trusses
- ✗ 1 Year Workmanship Warranty (Limited)
- ⚙️ 20 Year Warranty (See website for more info)
- ✓ Braces on Every Leg
- ✓ 4' Centers or Less

- Certified Available 150/50 12 Gauge
- Refer to PA Brochure for Pricing (Green)



Price Note:

- Customer must provide telescopic forklift
- Site inspection required.
- Colored screws and 26-gauge metal upgrade available.

✓ Footer requirements vary by local codes. Check before installation.

✓ Lot must be cleared and leveled prior to installation.

✓ Price does not include site preparation.



We accept all major credit cards

Free Installation on your level lot

1 Year Workmanship Warranty

All prices are subject to change without notice.

1-800-488-6903

alansfactoryoutlet.com

Wide Metal Building Prices

OPTIONS, ACCESSORIES AND EXTRAS

OPTIONS	20' LONG	24' LONG	28' LONG	32' LONG	36' LONG	40' LONG	44' LONG	48' LONG	52' LONG
12 Gauge	\$840	\$960	\$1,080	\$1,200	\$1,320	\$1,440	\$1,560	\$1,680	\$1,800
Connection Fee Per Lean-To	300	325	350	375	400	425	450	475	500

SIDE HEIGHT	HEIGHT	20' LONG	24' LONG	28' LONG	32' LONG	36' LONG	40' LONG	44' LONG	48' LONG	52' LONG
	10' Tall	\$430	\$520	\$605	\$690	\$780	\$865	\$950	\$1,035	\$1,125
	12' Tall	\$865	\$1,035	\$1,210	\$1,380	\$1,555	\$1,730	\$1,900	\$2,075	\$2,245
	14' Tall	\$1,535	\$1,845	\$2,150	\$2,460	\$2,765	\$3,070	\$3,380	\$3,685	\$3,995
	16' Tall	\$2,450	\$2,895	\$3,340	\$3,785	\$4,235	\$4,680	\$5,125	\$5,575	\$6,020
	18' Tall	\$3,360	\$3,840	\$4,320	\$4,800	\$5,280	\$5,760	\$6,240	\$6,720	\$7,200
	20' Tall	\$3,790	\$4,470	\$5,115	\$5,830	\$6,510	\$7,190	\$7,865	\$8,545	\$9,225

BOTH SIDES CLOSED	HEIGHT	20' LONG	24' LONG	28' LONG	32' LONG	36' LONG	40' LONG	44' LONG	48' LONG	52' LONG
	8' Tall	\$1,030	\$1,235	\$1,440	\$1,645	\$1,850	\$2,050	\$2,255	\$2,460	\$2,665
	10' Tall	\$1,175	\$1,405	\$1,630	\$1,870	\$2,100	\$2,350	\$2,580	\$2,810	\$3,035
	12' Tall	\$1,320	\$1,585	\$1,850	\$2,110	\$2,375	\$2,640	\$2,905	\$3,170	\$3,430
	14' Tall	\$1,465	\$1,755	\$2,050	\$2,340	\$2,635	\$2,930	\$3,220	\$3,515	\$3,805
	16' Tall	\$2,040	\$2,450	\$2,855	\$3,265	\$3,670	\$4,080	\$4,490	\$4,895	\$5,305
	18' Tall	\$2,470	\$2,970	\$3,460	\$3,955	\$4,450	\$4,945	\$5,440	\$5,935	\$6,425
	20' Tall	\$2,905	\$3,485	\$4,065	\$4,645	\$5,225	\$5,810	\$6,390	\$6,970	\$7,550
TWO TONE (Both Sides)		\$300	\$350	\$400	\$450	\$500	\$550	\$600	\$650	\$700

EACH END CLOSED	EACH END CLOSED	8' TALL	10' TALL	12' TALL	14' TALL	16' TALL	18' TALL	20' TALL	TWO TONE (Per End)
	32' Wide	\$2,755	\$2,935	\$3,115	\$3,295	\$3,475	\$3,655	\$3,835	\$600
	34' Wide	\$2,875	\$3,055	\$3,235	\$3,415	\$3,595	\$3,775	\$3,955	\$625
	36' Wide	\$2,995	\$3,175	\$3,355	\$3,535	\$3,715	\$3,895	\$4,075	\$650
	38' Wide	\$3,115	\$3,295	\$3,475	\$3,655	\$3,835	\$4,015	\$4,195	\$675
	40' Wide	\$3,235	\$3,415	\$3,595	\$3,775	\$3,955	\$4,135	\$4,315	\$700
	42' Wide	\$3,355	\$3,535	\$3,715	\$3,895	\$4,075	\$4,255	\$4,435	\$725
	44' Wide	\$3,475	\$3,655	\$3,835	\$4,015	\$4,195	\$4,375	\$4,555	\$750
	46' Wide	\$3,595	\$3,775	\$3,955	\$4,135	\$4,315	\$4,495	\$4,675	\$775
	48' Wide	\$3,715	\$3,895	\$4,075	\$4,255	\$4,435	\$4,615	\$4,795	\$800
	50' Wide	\$3,835	\$4,015	\$4,195	\$4,375	\$4,555	\$4,735	\$4,915	\$825
	52' Wide	\$3,955	\$4,135	\$4,315	\$4,495	\$4,675	\$4,855	\$5,035	\$850
	54' Wide	\$4,075	\$4,255	\$4,435	\$4,615	\$4,795	\$4,975	\$5,155	\$875
	56' Wide	\$4,195	\$4,375	\$4,555	\$4,735	\$4,915	\$5,095	\$5,275	\$900
	58' Wide	\$4,315	\$4,495	\$4,675	\$4,855	\$5,035	\$5,215	\$5,395	\$925
	60' Wide	\$4,435	\$4,615	\$4,795	\$4,975	\$5,155	\$5,335	\$5,515	\$950

	UNCERTIFIED		CERTIFIED		UNCERTIFIED		CERTIFIED	
	\$500	6' x 6'	\$750		\$600	6' x 6'	\$850	
	\$600	8' x 8'	\$800		\$700	8' x 8'	\$900	
	\$650	9' x 8'	\$850		\$750	9' x 8'	\$950	
	\$700	10' x 8'	\$950		\$800	10' x 8'	\$1,050	
	\$800	10' x 10'	\$1,050		\$900	10' x 10'	\$1,150	
	\$1400	*12' x 12'	\$1,900		\$1500	*12' x 12'	\$2,000	
	\$2100	*14' x 14'	\$2,500		\$2200	*14' x 14'	\$2,600	
	\$2500	*16' x 16'	\$2,700		\$2600	*16' x 16'	\$2,800	

**Chain Hoist Included In Price. **Color prices may vary.*

COLORED SCREWS
Add 3% of Retail Cost Of Building

CHAIN HOIST
\$325 Each

WINDOWS	
30" x 30"	30" x 36"
\$200	\$225



GABLE END	
32' to 40' Wide	\$600
42' to 50' Wide	\$750
52' to 60' Wide	\$900

FRAMEOUTS	
45° Angle	\$85
<i>(Plus Frameout Charge)</i>	
Garage Door	\$150
Window	\$75
Walk-In Door	\$90

	
\$250	\$275

SIDE OPENINGS UP TO 16'	
With Garage Door	\$325
Without Garage Door	\$425

INSULATION	
Double Bubble	\$1.50/sqft
Woven R-17*	\$3.00/sqft

	
---	---

Front View	32' to 60' W
	
Side View	Up to Any Length
	

WALK-IN DOORS 36" x 80"	
Fiberglass Door \$300	6 Steel Panel \$800
	



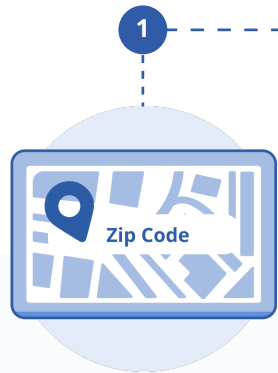
Check Your Area for Restrictions

All prices are subject to change without notice.

1-800-488-6903

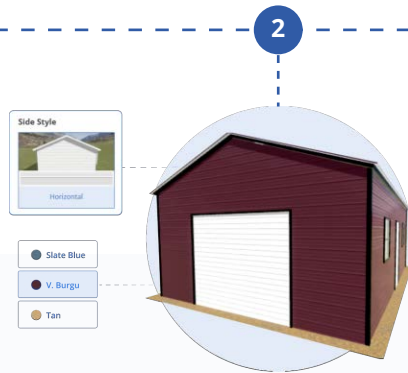
alansfactoryoutlet.com

How Our Order Process Works



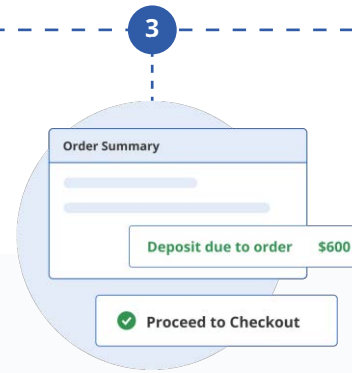
Enter Your Zip Code

Start your custom metal building journey by entering your zip code. This helps us verify availability and ensure accurate sales tax.



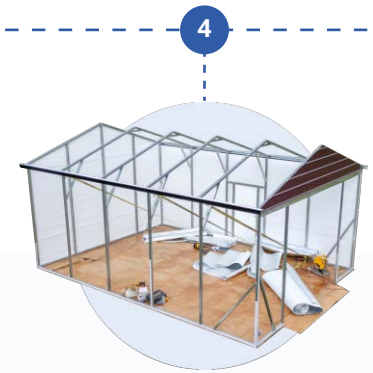
Customize Your Building

Use our 3D Builder to explore and choose every option for your perfect metal building.



Order with a Small Deposit

Alan's Factory Outlet only requires a small deposit on order and the remaining balance only after your building is installed to your satisfaction!



Delivery & Installation

The estimated delivery time frame is subject to change. During winter months, delivery times may be longer due to winter storms.






Guaranteed Satisfaction

Alan's Factory Outlet has been providing factory direct prices for over 22 years.

Customize Your Own Metal Garage or Carport With Our 3D Builder

Easily design, price, and buy online—plus get **free delivery and installation!**

-  Select a size to meet your needs
-  Choose roof, side, and trim colors
-  Add garage doors, windows, and walk-in doors

Customize Your Own

