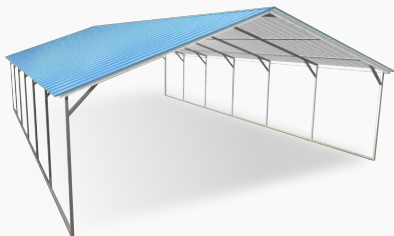


# Carport Prices Certified for 150 mph and 40 psf

IN, PA, OH and MD  
Prices subject to change without notice

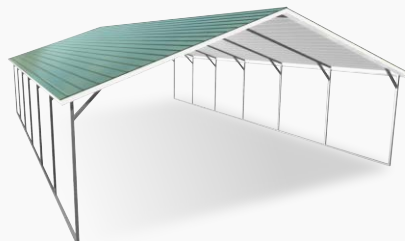
## Vertical Roof



Standard Heights 6'-16'

12x20	18x20	20x20	22x20	24x20
\$2,195	\$2,295	\$2,595	\$2,995	\$3,395
12x25	18x25	20x25	22x25	24x25
\$2,695	\$2,795	\$3,295	\$3,695	\$4,195
12x30	18x30	20x30	22x30	24x30
\$3,195	\$3,395	\$3,995	\$4,495	\$4,995
12x35	18x35	20x35	22x35	24x35
\$3,795	\$3,995	\$4,595	\$5,195	\$5,895
12x40	18x40	20x40	22x40	24x40
\$4,295	\$4,595	\$5,295	\$5,995	\$6,695
12x45	18x45	20x45	22x45	24x45
\$4,890	\$5,090	\$5,890	\$6,690	\$7,590
12x50	18x50	20x50	22x50	24x50
\$5,390	\$5,590	\$6,590	\$7,390	\$8,390

## Boxed Eave Roof



Standard Heights 6'-16'

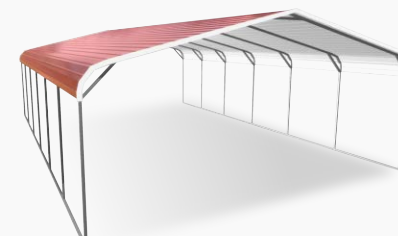
12x20	18x20	20x20	22x20	24x20
\$1,795	\$1,895	\$2,395	\$2,595	\$2,995
12x25	18x25	20x25	22x25	24x25
\$2,195	\$2,395	\$2,995	\$3,295	\$3,695
12x30	18x30	20x30	22x30	24x30
\$2,695	\$2,895	\$3,595	\$3,995	\$4,495
12x35	18x35	20x35	22x35	24x35
\$3,095	\$3,395	\$4,195	\$4,595	\$5,195

Buildings over 35 feet long must be vertical roof style.

Roof Length is 1 ft. Longer than Frame Length

- ✂ 1 Year Workmanship Warranty (Limited)
- ⚙ 10-Year Rust-Through Warranty on 14 GA, 2 1/2" Framing

## Regular Roof



Standard Heights 6'-16'

12x20	18x20	20x20	22x20	24x20
\$1,695	\$1,795	\$2,195	\$2,495	\$2,895
12x25	18x25	20x25	22x25	24x25
\$2,095	\$2,195	\$2,695	\$3,095	\$3,595
12x30	18x30	20x30	22x30	24x30
\$2,595	\$2,695	\$3,195	\$3,795	\$4,295
12x35	18x35	20x35	22x35	24x35
\$2,995	\$3,095	\$3,795	\$4,395	\$4,995

## 20 YEAR

Limited Rust Through Warranty on:

- ✓ Vertical roof panels only (up to any length)

### All buildings include:

- ✓ 29 Gauge Roofing
- ✓ 4' Braces on Every Leg 8' or Taller
- ✓ Anchors included
- ✓ 4' Centers or Less

Free color selection for roof, trim, and siding (if selected)



King Blue



Cardinal Red



True Burgundy



White



Clay



Black



Earth Brown



Tan



Pewter Gray



Sandstone



Barn Red



Pebble Beige



Slate Blue



Evergreen



Quaker Gray

- ✓ Footer requirements vary by local codes. Check before installation.
- ✓ Lot must be cleared and leveled prior to installation.
- ✓ Price does not include site preparation.



We accept all major credit cards

Free Installation on your level lot

1 Year Workmanship Warranty

All prices are subject to change without notice.

1-800-488-6903

alansfactoryoutlet.com

Metal Carport Prices

OPTIONS, ACCESSORIES AND EXTRAS

OPTIONS		20' LONG	25' LONG	30' LONG	35' LONG	40' LONG
12G 150/50		\$360	\$480	\$600	\$720	\$840
J-Trim		60	70	85	95	110

SIDE HEIGHT	HEIGHT (TALL)	20' L	25' L	30' L	35' L	40' L
	7'	\$110	\$130	\$155	\$180	\$205
	8'	\$215	\$265	\$310	\$360	\$410
	9'	\$325	\$395	\$470	\$540	\$610
	10'	\$430	\$530	\$625	\$720	\$815
	11'	\$540	\$660	\$780	\$900	\$1,020
	12'	\$840	\$995	\$1,140	\$1,295	\$1,440
	*13'	\$1,190	\$1,370	\$1,775	\$1,955	\$2,245
	*14'	\$1,295	\$1,500	\$1,930	\$2,135	\$2,450
	**15'	\$1,920	\$2,280	\$2,640	\$3,120	\$3,600
	**16'	\$2,160	\$2,520	\$2,880	\$3,360	\$3,840

\*Single Leg, Single Base Rail, Reinforced      \*\*Double Leg, Double Base Rail

CLOSE BOTH SIDES	HEIGHT (TALL)	20' L	25' L	30' L	35' L	40' L
	6'	\$440	\$520	\$620	\$700	\$860
	7'	\$550	\$650	\$775	\$875	\$1,075
	8' - 9'	\$660	\$780	\$930	\$1,050	\$1,290
	10'	\$770	\$910	\$1,085	\$1,225	\$1,505
	11' - 12'	\$880	\$1,040	\$1,240	\$1,400	\$1,720
	13'	\$990	\$1,170	\$1,395	\$1,575	\$1,935
	14' - 15'	\$1,100	\$1,300	\$1,550	\$1,750	\$2,150
	16'	\$1,210	\$1,430	\$1,705	\$1,925	\$2,365
VERT. SIDES <i>(Both Sides)</i>	6' - 10'	\$360	\$420	\$480	\$540	\$600
	11' - 15'	\$480	\$570	\$660	\$750	\$840
	16'	\$600	\$720	\$840	\$960	\$1,080
VERT. TWO TONE <i>(Both Sides)</i>		\$300	\$350	\$400	\$450	\$500

EACH END CLOSED	HEIGHT (TALL)	12' W	18' W	20' W	22' W	24' W
	6'	\$610	\$780	\$950	\$1,110	\$1,280
	7'	\$685	\$860	\$1,030	\$1,205	\$1,380
	8' - 9'	\$790	\$985	\$1,170	\$1,355	\$1,540
	10'	\$900	\$1,100	\$1,290	\$1,490	\$1,710
	11' - 12'	\$1,115	\$1,325	\$1,535	\$1,745	\$1,955
	13'	\$1,225	\$1,440	\$1,655	\$1,870	\$2,090
	14' - 15'	\$1,405	\$1,670	\$1,925	\$2,185	\$2,440
	16'	\$1,510	\$1,795	\$2,075	\$2,360	\$2,640
VERT. END <i>Per End</i>		\$150	\$270	\$300	\$330	\$360
VERT. TWO TONE <i>Per End</i>		\$200	\$250	\$300	\$350	\$400

White Only

P. Grey

Green

E. Brown

Barn Red

Beige

And More\*\*

UNCERTIFIED		CERTIFIED
\$500	6' x 6'	\$750
\$600	8' x 8'	\$800
\$650	9' x 8'	\$850
\$700	10' x 8'	\$950
\$800	10' x 10'	\$1,050
\$1400	*12' x 12'	\$1,900
\$2100	*14' x 14'	\$2,500
\$2500	*16' x 16'	\$2,700

UNCERTIFIED		CERTIFIED
\$600	6' x 6'	\$850
\$700	8' x 8'	\$900
\$750	9' x 8'	\$950
\$800	10' x 8'	\$1,050
\$900	10' x 10'	\$1,150
\$1500	*12' x 12'	\$2,000
\$2200	*14' x 14'	\$2,600
\$2600	*16' x 16'	\$2,800

\*Chain Hoist Included In Price.    \*\*Color prices may vary.

FRAMEOUTS	
45° Angle	\$85
<i>(Plus Frameout Charge)</i>	
Garage Door	\$150
Window	\$75
Walk-In Door	\$90

INSULATION	
Double Bubble	\$1.50/sqft
Woven R-17*	\$3.00/sqft

\*CCI Exclusive product

GABLE END	
Certified	\$225
Vertical Gable Add	\$50

COLORED SCREWS	
Add 3% of Retail Cost Of Building	

CHAIN HOIST	
\$325 Each	

SIDE OPENINGS	
<i>With Garage Door</i>	
6' - 10'	\$150
12' W	\$200
14' W	\$250
16' W	\$300

SIDE OPENINGS	
<i>Without Garage Door</i>	
6' - 10'	\$250
12' W	\$300
14' W	\$350
16' W	\$400
18' W	\$450
20' W	\$500

CUT PANEL	
21' L	\$50
26' L	\$60
31' L	\$70
36' L	\$80

CONNECTION FEES		
Side to Side	21' L	Start at \$100
Add \$25 For Each Additional 5' in Length		

WALK-IN DOORS 36" x 80"			
Fiberglass Door	\$300	6 Panel Steel Door	\$800



1/2 PANEL W/ TRIM	
21' L	\$220
26' L	\$260
31' L	\$310
36' L	\$350

PANELS 3'	
21' L	\$110
26' L	\$130
31' L	\$155
36' L	\$175

WINDOWS	
30" x 30"	30" x 36"
\$200	\$225



\$250	\$275
-------	-------



# Fully Enclosed Garages Certified for 150 mph and 40 psf (up to 50 psf optional)

IN, PA, OH and MD

Prices subject to change without notice

## Vertical Roof



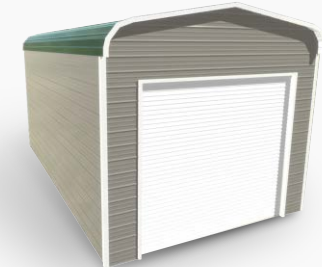
Includes 6" overhang on all sides

## Boxed Eave Roof



Includes 6" overhang on all sides

## Regular Roof



12x20	18x20	20x20	22x20	24x20
\$4,760	\$5,250	\$5,920	\$6,690	\$7,460
12x25	18x25	20x25	22x25	24x25
\$5,450	\$5,940	\$6,810	\$7,580	\$8,450
12x30	18x30	20x30	22x30	24x30
\$6,175	\$6,765	\$7,735	\$8,605	\$9,475
12x35	18x35	20x35	22x35	24x35
\$6,965	\$7,555	\$8,525	\$9,495	\$10,565
12x40	18x40	20x40	22x40	24x40
\$7,775	\$8,465	\$9,535	\$10,605	\$11,675

12x20	18x20	20x20	22x20	24x20
\$4,360	\$4,850	\$5,720	\$6,290	\$7,060
12x25	18x25	20x25	22x25	24x25
\$4,950	\$5,540	\$6,510	\$7,180	\$7,950
12x30	18x30	20x30	22x30	24x30
\$5,675	\$6,265	\$7,335	\$8,105	\$8,975
12x35	18x35	20x35	22x35	24x35
\$6,265	\$6,955	\$8,125	\$8,895	\$9,865

12x20	18x20	20x20	22x20	24x20
\$4,260	\$4,750	\$5,520	\$6,190	\$6,960
12x25	18x25	20x25	22x25	24x25
\$4,850	\$5,340	\$6,210	\$6,980	\$7,850
12x30	18x30	20x30	22x30	24x30
\$5,575	\$6,065	\$6,935	\$7,905	\$8,775
12x35	18x35	20x35	22x35	24x35
\$6,165	\$6,655	\$7,725	\$8,695	\$9,665

Buildings over 35 feet long must be vertical roof style.

\* All prices are for a fully enclosed, 9' tall, with no garage doors, walk in doors, or windows.

Sizes range from: 12' Wide – 24' Wide; 9' Standard Side Height, option to increase up to 16' tall.

### All buildings include:

- ✓ 29 Gauge Sheet Metal
- ✓ 4' Braces on Every Leg
- ✓ Anchors included
- ✓ 4' Centers

Roof Length is 1 ft. Longer than Frame Length

- ✂ 1 Year Workmanship Warranty (Limited)
- ⚙ 10-Year Rust-Through Warranty on 14 GA, 2 1/2" Framing

## 20 YEAR

Limited Rust Through Warranty on:

- ✓ Vertical roof panels only (up to any length)

Free color selection for roof, trim, and siding (if selected)



King Blue



Cardinal Red



True Burgundy



White



Clay



Black



Earth Brown



Tan



Pewter Gray



Sandstone



Barn Red



Pebble Beige



Slate Blue



Evergreen



Quaker Gray

✓ Footer requirements vary by local codes. Check before installation.

✓ Lot must be cleared and leveled prior to installation.

✓ Price does not include site preparation.



We accept all major credit cards

Free Installation on your level lot

1 Year Workmanship Warranty

All prices are subject to change without notice.

1-800-488-6903

alansfactoryoutlet.com

Metal Garage Prices

OPTIONS, ACCESSORIES AND EXTRAS

Below prices include the cost to make the entire garage taller  
(including taller side/end paneling & leg height)

12' W Garage	20' L	25' L	30' L	35' L	40' L
Increase to: 10' Tall Sides	\$435	\$485	\$530	\$575	\$640
Increase to: 11' Tall Sides	\$1,085	\$1,175	\$1,270	\$1,360	\$1,490
Increase to: 12' Tall Sides	\$1,385	\$1,510	\$1,630	\$1,755	\$1,910
Increase to: 13' Tall Sides	\$2,065	\$2,235	\$2,640	\$2,810	\$3,150
Increase to: 14' Tall Sides	\$2,640	\$2,855	\$3,310	\$3,525	\$3,930
Increase to: 15' Tall Sides	\$3,265	\$3,635	\$4,020	\$4,510	\$5,080
Increase to: 16' Tall Sides	\$3,825	\$4,215	\$4,625	\$5,135	\$5,745

20' W Garage	20' L	25' L	30' L	35' L	40' L
Increase to: 10' Tall Sides	\$455	\$505	\$550	\$595	\$660
Increase to: 11' Tall Sides	\$1,165	\$1,255	\$1,350	\$1,440	\$1,570
Increase to: 12' Tall Sides	\$1,465	\$1,585	\$1,710	\$1,835	\$1,990
Increase to: 13' Tall Sides	\$2,165	\$2,335	\$2,740	\$2,910	\$3,250
Increase to: 14' Tall Sides	\$2,920	\$3,135	\$3,590	\$3,805	\$4,210
Increase to: 15' Tall Sides	\$3,545	\$4,455	\$4,300	\$4,790	\$5,360
Increase to: 16' Tall Sides	\$4,195	\$4,585	\$4,995	\$5,505	\$6,115

24' W Garage	20' L	25' L	30' L	35' L	40' L
Increase to: 10' Tall Sides	\$550	\$605	\$650	\$695	\$760
Increase to: 11' Tall Sides	\$1,265	\$1,355	\$1,450	\$1,540	\$1,670
Increase to: 12' Tall Sides	\$1,565	\$1,690	\$1,810	\$1,935	\$2,090
Increase to: 13' Tall Sides	\$2,295	\$2,465	\$2,870	\$3,040	\$3,380
Increase to: 14' Tall Sides	\$3,210	\$3,425	\$3,880	\$4,095	\$4,500
Increase to: 15' Tall Sides	\$3,835	\$4,205	\$4,590	\$5,080	\$5,650
Increase to: 16' Tall Sides	\$4,585	\$4,975	\$5,385	\$5,895	\$6,505

Option, Based on Length	20' L	25' L	30' L	35' L	40' L
150 MPH/50 PSF, 12 GA	\$360	\$480	\$600	\$720	\$840
Vertical Siding, Both Sides, 9'-10' Tall	\$360	\$420	\$480	\$540	\$600
Vertical Siding, Both Sides, 11'-15' Tall	\$480	\$570	\$660	\$750	\$840
Vertical Siding, Both Sides, 16' Tall	\$600	\$720	\$840	\$960	\$1,080
Vertical Two-Toned, Both Sides	\$300	\$350	\$400	\$450	\$500

Option, Based on Width	12' W	18' W	20' W	22' W	24' W
Vertical Siding, Both Ends	\$300	\$540	\$600	\$660	\$720
Vertical Two-Toned Both Ends	\$400	\$500	\$600	\$700	\$800

CONNECTION FEES			COLORED SCREWS		INSULATION	
Side to Side	21' L	Start at \$100	Add 3% of Retail Cost Of Building		Double Bubble	\$1.50/sqft
Add \$25 For Each Additional 5' in Length			CHAIN HOIST		Woven R-17*	\$3.00/sqft
			\$325 Each		*CCI Exclusive product	

18' W Garage	20' L	25' L	30' L	35' L	40' L
Increase to: 10' Tall Sides	\$445	\$495	\$540	\$585	\$650
Increase to: 11' Tall Sides	\$1,115	\$1,205	\$1,300	\$1,390	\$1,520
Increase to: 12' Tall Sides	\$1,415	\$1,540	\$1,660	\$1,785	\$1,940
Increase to: 13' Tall Sides	\$2,105	\$2,275	\$2,680	\$2,850	\$3,190
Increase to: 14' Tall Sides	\$2,780	\$2,995	\$3,450	\$3,665	\$4,070
Increase to: 15' Tall Sides	\$3,405	\$3,775	\$4,160	\$4,650	\$5,220
Increase to: 16' Tall Sides	\$4,005	\$4,395	\$4,805	\$5,315	\$5,925

22' W Garage	20' L	25' L	30' L	35' L	40' L
Increase to: 10' Tall Sides	\$485	\$535	\$580	\$625	\$690
Increase to: 11' Tall Sides	\$1,215	\$1,305	\$1,400	\$1,490	\$1,620
Increase to: 12' Tall Sides	\$1,515	\$1,640	\$1,760	\$1,885	\$2,040
Increase to: 13' Tall Sides	\$2,225	\$2,395	\$2,800	\$2,970	\$3,310
Increase to: 14' Tall Sides	\$3,070	\$3,285	\$3,740	\$3,955	\$4,360
Increase to: 15' Tall Sides	\$3,695	\$4,065	\$4,450	\$4,940	\$5,510
Increase to: 16' Tall Sides	\$4,395	\$4,785	\$4,625	\$5,705	\$6,315

White Only		
UNCERTIFIED	CERTIFIED	
\$500	6' x 6'	\$750
\$600	8' x 8'	\$800
\$650	9' x 8'	\$850
\$700	10' x 8'	\$950
\$800	10' x 10'	\$1,050
\$1,400	*12' x 12'	\$1,900
\$2,100	*14' x 14'	\$2,500
\$2,000	*16' x 8'	\$2,300
\$2,500	*16' x 16'	\$2,700

Colored		
UNCERTIFIED	CERTIFIED	
\$600	6' x 6'	\$850
\$700	8' x 8'	\$900
\$750	9' x 7'	\$950
\$750	9' x 8'	\$950
\$800	10' x 8'	\$1,050
\$900	10' x 10'	\$1,150
\$1500	*12' x 12'	\$2,000
\$2200	*14' x 14'	\$2,600
\$2100	*16' x 8'	\$2,400
\$2600	*16' x 16'	\$2,800

SIDE OPENINGS	
With Garage Door	
6' - 10'	\$150
12' W	\$200
14' W	\$250
16' W	\$300

SIDE OPENINGS	
Without Garage Door	
6' - 10'	\$250
12' W	\$300
14' W	\$350
16' W	\$400
18' W	\$450
20' W	\$500

\*Colored Garage Doors only available in Pewter Gray, Evergreen, Earth Brown, Barn Red, Pebble Beige and more.

(\*)Indicates a Chain Hoist is included with garage door. {All other sizes can have a chain hoist added for an additional fee}

FRAMEOUTS

45° Angle

\$85

Garage Door

\$150

Window

\$75

Walk-In Door

\$90

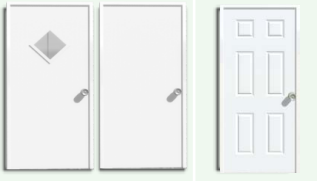
WALK-IN DOORS 36" x 80"

Fiberglass Door

\$300

6 Steel Panel

\$800



WINDOWS

30" x 30"

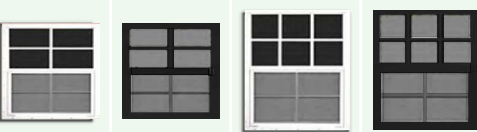
\$200

\$250

30" x 36"

\$225

\$275

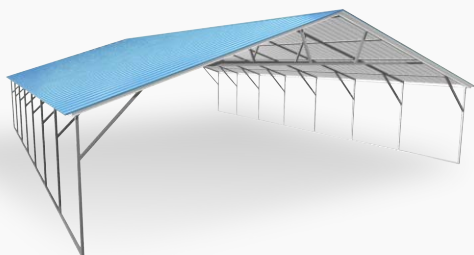


# Triple Wide Carport Certified for 150 mph and 40 psf

IN, PA, OH and MD

Prices subject to change without notice

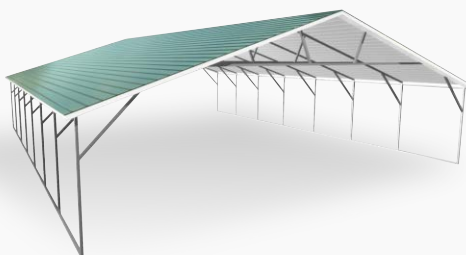
## Vertical Roof



Standard Heights 6'-16'

26x20	28x20	30x20
\$3,495	\$3,595	\$3,695
26x25	28x25	30x25
\$4,295	\$4,495	\$4,595
26x30	28x30	30x30
\$5,195	\$5,395	\$5,595
26x35	28x35	30x35
\$6,095	\$6,295	\$6,495
26x40	28x40	30x40
\$6,995	\$7,195	\$7,395
26x45	28x45	30x45
\$7,790	\$8,090	\$8,290
26x50	28x50	30x50
\$8,590	\$8,990	\$9,190

## Boxed Eave Roof

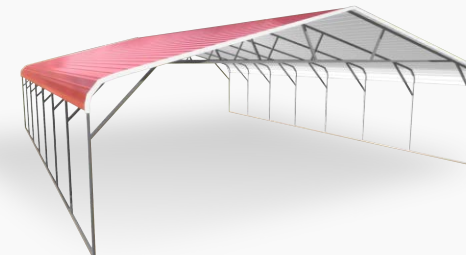


Standard Heights 6'-16'

26x20	28x20	30x20
\$3,195	\$3,395	\$3,495
26x25	28x25	30x25
\$3,995	\$4,195	\$4,295
26x30	28x30	30x30
\$4,895	\$4,995	\$5,195
26x35	28x35	30x35
\$5,695	\$5,895	\$6,095

Buildings over 35 feet long must be vertical roof style.

## Regular Roof



Standard Heights 6'-16'

26x20	28x20	30x20
\$3,095	\$3,195	\$3,395
26x25	28x25	30x25
\$3,895	\$3,995	\$4,195
26x30	28x30	30x30
\$4,695	\$4,895	\$4,995
26x35	28x35	30x35
\$5,495	\$5,695	\$5,895

Roof Length is 1 ft. Longer than Frame Length

✂ 1 Year Workmanship Warranty (Limited)

⚙ 10-Year Rust-Through Warranty on 14 GA, 2 1/2" Framing

### 20 YEAR

Limited Rust Through Warranty on:

✓ Vertical roof panels only (up to any length)

### All buildings include:

- ✓ 29 Gauge Roofing
- ✓ Braces on Every Leg
- ✓ Anchors included
- ✓ 4' Centers
- ✓ Welded Center Truss

Free color selection for roof, trim, and siding (if selected)



**15' - 16' Ht  
REQUIRES A  
TELESCOPIC  
FORKLIFT**

✓ Footer requirements vary by local codes. Check before installation.

✓ Lot must be cleared and leveled prior to installation.

✓ Price does not include site preparation.



We accept all major credit cards

Free Installation on your level lot

1 Year Workmanship Warranty

All prices are subject to change without notice.

1-800-488-6903

alansfactoryoutlet.com



Triple Wide Carport Prices

OPTIONS, ACCESSORIES AND EXTRAS

OPTIONS		20' LONG	25' LONG	30' LONG	35' LONG	40' LONG
12G 150/50		\$410	\$530	\$650	\$770	\$890
J-Trim		60	70	85	95	110

SIDE HEIGHT	HEIGHT (TALL)	20' L	25' L	30' L	35' L	40' L
	7'	\$110	\$130	\$155	\$180	\$205
	8'	\$215	\$265	\$310	\$360	\$410
	9'	\$325	\$395	\$470	\$540	\$610
	10'	\$430	\$530	\$625	\$720	\$815
	11'	\$540	\$660	\$780	\$900	\$1,020
	12'	\$840	\$995	\$1,140	\$1,295	\$1,440
	*13'	\$1,190	\$1,370	\$1,775	\$1,955	\$2,245
	*14'	\$1,295	\$1,500	\$1,930	\$2,135	\$2,450
	**15'	\$1,920	\$2,280	\$2,640	\$3,120	\$3,600
	**16'	\$2,160	\$2,520	\$2,880	\$3,360	\$3,840

\*Single Leg, Single Base Rail, Reinforced      \*\*Double Leg, Double Base Rail

BOTH SIDES CLOSED	HEIGHT (TALL)	20' L	25' L	30' L	35' L	40' L
	6'	\$440	\$520	\$620	\$700	\$860
	7'	\$550	\$650	\$775	\$875	\$1,075
	8' - 9'	\$660	\$780	\$930	\$1,050	\$1,290
	10'	\$770	\$910	\$1,085	\$1,225	\$1,505
	11' - 12'	\$880	\$1,040	\$1,240	\$1,400	\$1,720
	13'	\$990	\$1,170	\$1,395	\$1,575	\$1,935
	14' - 15'	\$1,100	\$1,300	\$1,550	\$1,750	\$2,150
VERT. SIDES (Both Sides)	16'	\$1,210	\$1,430	\$1,705	\$1,925	\$2,365
	6' - 10'	\$360	\$420	\$480	\$540	\$600
	11' - 15'	\$480	\$570	\$660	\$750	\$840
VERT. TWO TONE (Both Sides)		\$300	\$350	\$400	\$450	\$500

EACH END CLOSED	HEIGHT (TALL)	26' W	28' W	30' W
	6'	\$1,250	\$1,390	\$1,530
	7'	\$1,350	\$1,500	\$1,645
	8' - 9'	\$1,555	\$1,715	\$1,870
	10'	\$1,655	\$1,825	\$1,985
	11' - 12'	\$1,860	\$2,040	\$2,215
	13'	\$1,960	\$2,150	\$2,330
	14' - 15'	\$2,165	\$2,365	\$2,555
VERT. END Per End	16'	\$2,270	\$2,470	\$2,670
VERT. TWO TONE Per End		\$450	\$510	\$570
		\$450	\$500	\$550

Side View      Up to Any Length



Front View      26' to 30' W



White Only	UNCERTIFIED		CERTIFIED
	\$500	6' x 6'	\$750
	\$600	8' x 8'	\$800
	\$650	9' x 8'	\$850
	\$700	10' x 8'	\$950
	\$800	10' x 10'	\$1,050
	\$1400	*12' x 12'	\$1,900
	\$2100	*14' x 14'	\$2,500
	\$2500	*16' x 16'	\$2,700



UNCERTIFIED		CERTIFIED
\$600	6' x 6'	\$850
\$700	8' x 8'	\$900
\$750	9' x 8'	\$950
\$800	10' x 8'	\$1,050
\$900	10' x 10'	\$1,150
\$1500	*12' x 12'	\$2,000
\$2200	*14' x 14'	\$2,600
\$2600	*16' x 16'	\$2,800

\*Chain Hoist Included In Price.    \*\*Color prices may vary.

CONNECTION FEES		
Side to Side	21' L	Start at \$100
Add \$25 For Each Additional 5' in Length		

INSULATION	
Double Bubble	\$1.50/sqft
Woven R-17*	\$3.00/sqft

\*CCI Exclusive product


1/2 PANEL W/ TRIM	
21' L	\$220
26' L	\$260
31' L	\$310
36' L	\$350

GABLE END	
Certified	\$300
Vertical Gable Add	\$85

SIDE OPENINGS	
With Garage Door	
6' - 10'	\$150
12' W	\$200
14' W	\$250
16' W	\$300


SIDE OPENINGS	
Without Garage Door	
6' - 10'	\$250
12' W	\$300
14' W	\$350
16' W	\$400
18' W	\$450
20' W	\$500

WALK-IN DOORS 36" x 80"	
Fiberglass Door \$300	6 Panel Steel Door \$800




CHAIN HOIST	
\$325 Each	

WINDOWS	
30" x 30"	30" x 36"
\$200	\$225



\$250	\$275
-------	-------



CUT PANEL	
21' L	\$50
26' L	\$60
31' L	\$70
36' L	\$80

PANELS 3'	
21' L	\$110
26' L	\$130
31' L	\$155
36' L	\$175

# 32' to 60' Wide Metal Building

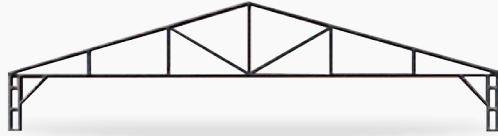
Certified for 150 mph and 40 psf

IN, PA, OH and MD

Prices subject to change without notice

## 32' to 40' Wide

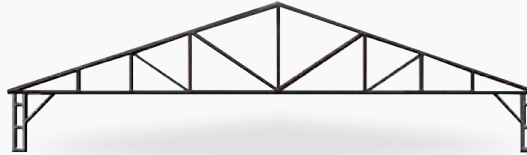
## 8' to 20' Tall



32x20	34x20	36x20	38x20	40x20
\$7,295	\$7,695	\$8,195	\$8,595	\$9,195
32x24	34x24	36x24	38x24	40x24
\$8,595	\$8,995	\$9,495	\$9,995	\$10,595
32x28	34x28	36x28	38x28	40x28
\$9,795	\$10,295	\$10,795	\$11,295	\$11,895
32x32	34x32	36x32	38x32	40x32
\$11,095	\$11,595	\$12,095	\$12,595	\$13,195
32x36	34x36	36x36	38x36	40x36
\$12,395	\$12,995	\$13,395	\$13,895	\$14,495
32x40	34x40	36x40	38x40	40x40
\$13,595	\$14,295	\$14,795	\$15,195	\$15,795
32x44	34x44	36x44	38x44	40x44
\$14,895	\$15,595	\$16,095	\$16,595	\$17,195
32x48	34x48	36x48	38x48	40x48
\$16,095	\$16,895	\$17,395	\$17,895	\$18,495
32x52	34x52	36x52	38x52	40x52
\$17,395	\$18,195	\$18,695	\$19,195	\$19,795

## 42' to 50' Wide

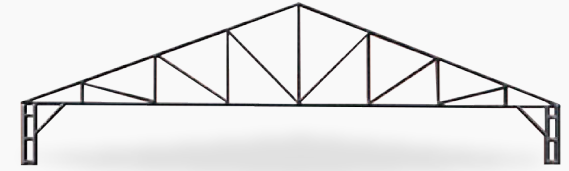
## 8' to 20' Tall



42x20	44x20	46x20	48x20	50x20
\$9,595	\$10,095	\$10,695	\$11,295	\$11,995
42x24	44x24	46x24	48x24	50x24
\$10,895	\$11,395	\$11,995	\$12,695	\$13,395
42x28	44x28	46x28	48x28	50x28
\$12,195	\$12,695	\$13,295	\$13,995	\$14,795
42x32	44x32	46x32	48x32	50x32
\$13,595	\$13,995	\$14,595	\$15,395	\$16,095
42x36	44x36	46x36	48x36	50x36
\$14,895	\$15,395	\$15,995	\$16,795	\$17,495
42x40	44x40	46x40	48x40	50x40
\$16,195	\$16,695	\$17,295	\$18,195	\$18,895
42x44	44x44	46x44	48x44	50x44
\$17,495	\$17,995	\$18,595	\$19,595	\$20,295
42x48	44x48	46x48	48x48	50x48
\$18,795	\$19,295	\$19,895	\$20,895	\$21,695
42x52	44x52	46x52	48x52	50x52
\$20,195	\$20,595	\$21,195	\$22,295	\$22,995

## 52' to 60' Wide

## 8' to 20' Tall



52x20	54x20	56x20	58x20	60x20
\$12,495	\$13,295	\$13,995	\$14,795	\$15,495
52x24	54x24	56x24	58x24	60x24
\$13,895	\$14,695	\$15,395	\$16,095	\$16,895
52x28	54x28	56x28	58x28	60x28
\$15,195	\$16,095	\$16,795	\$17,495	\$18,195
52x32	54x32	56x32	58x32	60x32
\$16,595	\$17,495	\$18,195	\$18,895	\$19,595
52x36	54x36	56x36	58x36	60x36
\$17,995	\$18,795	\$19,595	\$20,295	\$20,995
52x40	54x40	56x40	58x40	60x40
\$19,395	\$20,195	\$20,895	\$21,695	\$22,395
52x44	54x44	56x44	58x44	60x44
\$20,795	\$21,595	\$22,295	\$22,995	\$23,795
52x48	54x48	56x48	58x48	60x48
\$22,095	\$22,995	\$23,695	\$24,395	\$25,095
52x52	54x52	56x52	58x52	60x52
\$23,495	\$24,395	\$25,095	\$25,795	\$26,495

### Price Includes:

- ✓ 4' Centers or Less
- ✓ 29 Gauge Roofing
- ✓ 14 Gauge Framing
- ✓ Welded Trusses
- ✗ 1 Year Workmanship Warranty (Limited)
- ✓ Braces on Every Leg
- ✓ Lap or Vertical Siding Panels

### 20 YEAR

Limited Rust Through Warranty on:

- ✓ Vertical roof panels only (up to any length)



### Price Note:

- Customer **must** provide telescopic forklift
- Site inspection **required**.
- Colored screws and 26-gauge metal upgrade **available**.
- Upgrade Available, 12G 150/50.

✓ Footer requirements vary by local codes. Check before installation.

✓ Lot must be cleared and leveled prior to installation.

✓ Price does not include site preparation.



We accept all major credit cards

Free Installation on your level lot

1 Year Workmanship Warranty

All prices are subject to change without notice.

1-800-488-6903

alansfactoryoutlet.com

# Wide Metal Building Prices

## OPTIONS, ACCESSORIES AND EXTRAS

OPTIONS	20' LONG	24' LONG	28' LONG	32' LONG	36' LONG	40' LONG	44' LONG	48' LONG	52' LONG
12 G 150/50	\$840	\$960	\$1,080	\$1,200	\$1,320	\$1,440	\$1,560	\$1,680	\$1,800
Connection Fee Per Lean-To	300	325	350	375	400	425	450	475	500

SIDE HEIGHT	HEIGHT	20' LONG	24' LONG	28' LONG	32' LONG	36' LONG	40' LONG	44' LONG	48' LONG	52' LONG
	10' Tall	\$430	\$520	\$605	\$690	\$780	\$865	\$950	\$1,035	\$1,125
	12' Tall	\$865	\$1,035	\$1,210	\$1,380	\$1,555	\$1,730	\$1,900	\$2,075	\$2,245
	14' Tall	\$1,535	\$1,845	\$2,150	\$2,460	\$2,765	\$3,070	\$3,380	\$3,685	\$3,995
	16' Tall	\$2,450	\$2,895	\$3,340	\$3,785	\$4,235	\$4,680	\$5,125	\$5,575	\$6,020
	18' Tall	\$3,360	\$3,840	\$4,320	\$4,800	\$5,280	\$5,760	\$6,240	\$6,720	\$7,200
	20' Tall	\$3,790	\$4,470	\$5,115	\$5,830	\$6,510	\$7,190	\$7,865	\$8,545	\$9,225

BOTH SIDES CLOSED	HEIGHT	20' LONG	24' LONG	28' LONG	32' LONG	36' LONG	40' LONG	44' LONG	48' LONG	52' LONG
	8' Tall	\$1,030	\$1,235	\$1,440	\$1,645	\$1,850	\$2,050	\$2,255	\$2,460	\$2,665
	10' Tall	\$1,175	\$1,405	\$1,630	\$1,870	\$2,100	\$2,350	\$2,580	\$2,810	\$3,035
	12' Tall	\$1,320	\$1,585	\$1,850	\$2,110	\$2,375	\$2,640	\$2,905	\$3,170	\$3,430
	14' Tall	\$1,465	\$1,755	\$2,050	\$2,340	\$2,635	\$2,930	\$3,220	\$3,515	\$3,805
	16' Tall	\$2,040	\$2,450	\$2,855	\$3,265	\$3,670	\$4,080	\$4,490	\$4,895	\$5,305
	18' Tall	\$2,470	\$2,970	\$3,460	\$3,955	\$4,450	\$4,945	\$5,440	\$5,935	\$6,425
	20' Tall	\$2,905	\$3,485	\$4,065	\$4,645	\$5,225	\$5,810	\$6,390	\$6,970	\$7,550
TWO TONE (Both Sides)	HEIGHT	20' LONG	24' LONG	28' LONG	32' LONG	36' LONG	40' LONG	44' LONG	48' LONG	52' LONG
	8' Tall	\$300	\$350	\$400	\$450	\$500	\$550	\$600	\$650	\$700

EACH END CLOSED	EACH END CLOSED	8' TALL	10' TALL	12' TALL	14' TALL	16' TALL	18' TALL	20' TALL	TWO TONE (Per End)
	32' Wide	\$2,755	\$2,935	\$3,115	\$3,295	\$3,475	\$3,655	\$3,835	\$600
	34' Wide	\$2,875	\$3,055	\$3,235	\$3,415	\$3,595	\$3,775	\$3,955	\$625
	36' Wide	\$2,995	\$3,175	\$3,355	\$3,535	\$3,715	\$3,895	\$4,075	\$650
	38' Wide	\$3,115	\$3,295	\$3,475	\$3,655	\$3,835	\$4,015	\$4,195	\$675
	40' Wide	\$3,235	\$3,415	\$3,595	\$3,775	\$3,955	\$4,135	\$4,315	\$700
	42' Wide	\$3,355	\$3,535	\$3,715	\$3,895	\$4,075	\$4,255	\$4,435	\$725
	44' Wide	\$3,475	\$3,655	\$3,835	\$4,015	\$4,195	\$4,375	\$4,555	\$750
	46' Wide	\$3,595	\$3,775	\$3,955	\$4,135	\$4,315	\$4,495	\$4,675	\$775
	48' Wide	\$3,715	\$3,895	\$4,075	\$4,255	\$4,435	\$4,615	\$4,795	\$800
	50' Wide	\$3,835	\$4,015	\$4,195	\$4,375	\$4,555	\$4,735	\$4,915	\$825
	52' Wide	\$3,955	\$4,135	\$4,315	\$4,495	\$4,675	\$4,855	\$5,035	\$850
	54' Wide	\$4,075	\$4,255	\$4,435	\$4,615	\$4,795	\$4,975	\$5,155	\$875
	56' Wide	\$4,195	\$4,375	\$4,555	\$4,735	\$4,915	\$5,095	\$5,275	\$900
	58' Wide	\$4,315	\$4,495	\$4,675	\$4,855	\$5,035	\$5,215	\$5,395	\$925
	60' Wide	\$4,435	\$4,615	\$4,795	\$4,975	\$5,155	\$5,335	\$5,515	\$950

White Only	UNCERTIFIED		CERTIFIED	
	\$500	6' x 6'	\$750	
	\$600	8' x 8'	\$800	
	\$650	9' x 8'	\$850	
	\$700	10' x 8'	\$950	
	\$800	10' x 10'	\$1,050	
	\$1400	*12' x 12'	\$1,900	
	\$2100	*14' x 14'	\$2,500	
P. Grey Green E. Brown Barn Red Beige And More**	UNCERTIFIED		CERTIFIED	
	\$600	6' x 6'	\$850	
	\$700	8' x 8'	\$900	
	\$750	9' x 8'	\$950	
	\$800	10' x 8'	\$1,050	
	\$900	10' x 10'	\$1,150	
	\$1500	*12' x 12'	\$2,000	
	\$2200	*14' x 14'	\$2,600	
And More**	UNCERTIFIED		CERTIFIED	
	\$2600	*16' x 16'	\$2,800	

\*Chain Hoist Included In Price. \*\*Color prices may vary.

COLORED SCREWS
Add 3% of Retail Cost Of Building

CHAIN HOIST
\$325 Each

WINDOWS	
30" x 30"	30" x 36"
\$200	\$225



GABLE END	
32' to 40' Wide	\$600
42' to 50' Wide	\$750
52' to 60' Wide	\$900

FRAMEOUTS	
45° Angle	\$85
(Plus Frameout Charge)	
Garage Door	\$150
Window	\$75
Walk-In Door	\$90

	
\$250	\$275

SIDE OPENINGS UP TO 16'	
With Garage Door	\$325
Without Garage Door	\$425

INSULATION	
Double Bubble	\$1.50/sqft
Woven R-17*	\$3.00/sqft

	
---	---

\*CCI Exclusive product

Front View	32' to 60' W
	
Side View	Up to Any Length
	

WALK-IN DOORS 36" x 80"	
Fiberglass Door \$300	6 Steel Panel \$800
	



Check Your Area for Restrictions

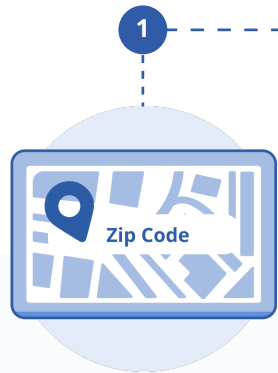
All prices are subject to change without notice.

1-800-488-6903

alansfactoryoutlet.com

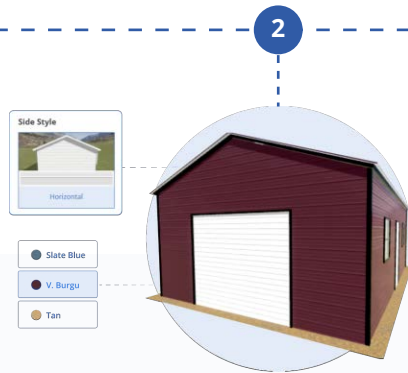


# How Our Order Process Works



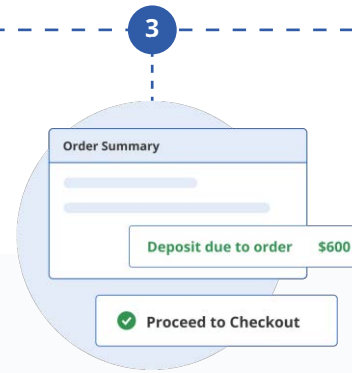
## Enter Your Zip Code

Start your custom metal building journey by entering your zip code. This helps us verify availability and ensure accurate sales tax.



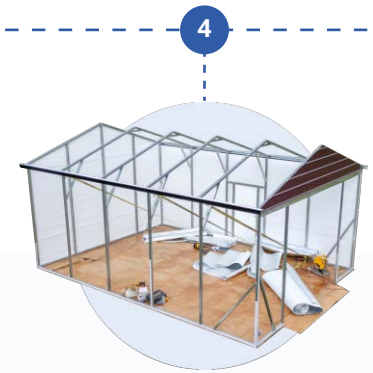
## Customize Your Building

Use our 3D Builder to explore and choose every option for your perfect metal building.



## Order with a Small Deposit

Alan's Factory Outlet only requires a small deposit on order and the remaining balance only after your building is installed to your satisfaction!



## Delivery & Installation

The estimated delivery time frame is subject to change. During winter months, delivery times may be longer due to winter storms.






## Guaranteed Satisfaction

Alan's Factory Outlet has been providing factory direct prices for over 22 years.

## Customize Your Own Metal Garage or Carport With Our 3D Builder

Easily design, price, and buy online—plus get **free delivery and installation!**

-  Select a size to meet your needs
-  Choose roof, side, and trim colors
-  Add garage doors, windows, and walk-in doors

**Customize Your Own**

