



Alan's FACTORY OUTLET

Alan's Factory Outlet www.alansfactoryoutlet.com 1-800-488-6903

32 to 60 Wide Certified 105 mph and 65 psf

Carport Price List for PA, NY, OH, MD, IN and NJ.

Prices on this page are 8' sides carport roof. To close sides, make taller or turn into a metal building refer to 2nd page.

*Prices subject to change without notice.

PRICE INCLUDES:

- Vertical or Lap Siding Panels
- 1 Year Workmanship Warranty (Limited)
- 20 Year Warranty (See web for more info)
- 29 Gauge Roofing
- Cement Anchors
- Mobile Home Anchors (Ground)
- Welded Truss
- Braces On Every Leg
- 4' Centers or Less
- 12 Gauge

**PRICES
FOR
TOP ONLY**



PLEASE NOTE:

- Customer must provide **TELESCOPIC FORK LIFT** during installation and must be able to reach 10' beyond building height.
- Site inspection required before installation.
- Colored screws available
- 26 Ga. Metal Upgrade Available

Certified 105mph/65psf 32' to 40' Wide / 8' to 20' Tall				
32 x 20	34 x 20	36 x 20	38 x 20	40 x 20
\$6,395	\$6,695	\$7,095	\$7,495	\$7,995
32 x 24	34 x 24	36 x 24	38 x 24	40 x 24
\$7,495	\$7,845	\$8,245	\$8,645	\$9,145
32 x 28	34 x 28	36 x 28	38 x 28	40 x 28
\$8,595	\$8,995	\$9,395	\$9,795	\$10,295
32 x 32	34 x 32	36 x 32	38 x 32	40 x 32
\$9,695	\$10,145	\$10,545	\$10,945	\$11,445
32 x 36	34 x 36	36 x 36	38 x 36	40 x 36
\$10,795	\$11,295	\$11,695	\$12,095	\$12,595
32 x 40	34 x 40	36 x 40	38 x 40	40 x 40
\$11,895	\$12,445	\$12,845	\$13,245	\$13,745
32 x 44	34 x 44	36 x 44	38 x 44	40 x 44
\$12,995	\$13,595	\$13,995	\$14,395	\$14,895
32 x 48	34 x 48	36 x 48	38 x 48	40 x 48
\$14,095	\$14,745	\$15,145	\$15,545	\$16,045
32 x 52	34 x 52	36 x 52	38 x 52	40 x 52
\$15,195	\$15,895	\$16,245	\$16,695	\$17,195

4' Centers 12Ga.

Certified 105mph/65psf 42' to 50' Wide / 8' to 20' Tall				
42 x 20	44 x 20	46 x 20	48 x 20	50 x 20
\$8,295	\$8,695	\$9,195	\$9,695	\$10,295
42 x 24	44 x 24	46 x 24	48 x 24	50 x 24
\$9,445	\$9,845	\$10,345	\$10,895	\$11,495
42 x 28	44 x 28	46 x 28	48 x 28	50 x 28
\$10,595	\$10,995	\$11,495	\$12,095	\$12,695
42 x 32	44 x 32	46 x 32	48 x 32	50 x 32
\$11,745	\$12,145	\$12,645	\$13,295	\$13,895
42 x 36	44 x 36	46 x 36	48 x 36	50 x 36
\$12,895	\$13,295	\$13,795	\$14,495	\$15,095
42 x 40	44 x 40	46 x 40	48 x 40	50 x 40
\$14,045	\$14,445	\$14,945	\$15,695	\$16,295
42 x 44	44 x 44	46 x 44	48 x 44	50 x 44
\$15,195	\$15,595	\$16,095	\$16,895	\$17,495
42 x 48	44 x 48	46 x 48	48 x 48	50 x 48
\$16,345	\$16,745	\$17,245	\$18,095	\$18,695
42 x 52	44 x 52	46 x 52	48 x 52	50 x 52
\$17,495	\$17,895	\$18,395	\$19,295	\$19,895

4' Centers 12Ga.

Certified 105mph/65psf 52' to 60' Wide / 8' to 20' Tall				
52 x 20	54 x 20	56 x 20	58 x 20	60 x 20
\$10,695	\$11,395	\$11,995	\$12,595	\$13,195
52 x 24	54 x 24	56 x 24	58 x 24	60 x 24
\$11,895	\$12,595	\$13,195	\$13,795	\$14,395
52 x 28	54 x 28	56 x 28	58 x 28	60 x 28
\$13,095	\$13,795	\$14,395	\$14,995	\$15,595
52 x 32	54 x 32	56 x 32	58 x 32	60 x 32
\$14,295	\$14,995	\$15,595	\$16,195	\$16,795
52 x 36	54 x 36	56 x 36	58 x 36	60 x 36
\$15,495	\$16,195	\$16,795	\$17,395	\$17,995
52 x 40	54 x 40	56 x 40	58 x 40	60 x 40
\$16,695	\$17,395	\$17,995	\$18,595	\$19,195
52 x 44	54 x 44	56 x 44	58 x 44	60 x 44
\$17,895	\$18,595	\$19,195	\$19,795	\$20,395
52 x 48	54 x 48	56 x 48	58 x 48	60 x 48
\$19,095	\$19,795	\$20,395	\$20,995	\$21,595
52 x 52	54 x 52	56 x 52	58 x 52	60 x 52
\$20,295	\$20,995	\$21,595	\$22,195	\$22,795

3' 6" Centers or Less 12Ga.

PLEASE NOTE THAT COLORS MAY VARY DUE TO PRINTING PROCESS											
B. Red	Black	V. Burgundy	Clay	E. Brown	E. Green	P. Beige	P. Gray	Q. Gray	S. Stone	S. Blue	Tan
											White

NEW COLORS		
C. Red	T. Burgundy	King Blue

Certified Available 170/35 14ga. Refer to NC Brochure for Pricing.	Snow Load Wind Load
---	------------------------

OPTIONS, ACCESSORIES AND EXTRAS

OPTIONS	20' LONG	24' LONG	28' LONG	32' LONG	36' LONG	40' LONG	44' LONG	48' LONG	52' LONG
CONNECTION FEE PER LEAN TO	\$300	\$325	\$350	\$375	\$400	\$425	\$450	\$475	\$500

DELUXE TWO TONE	\$600	\$700	\$800	\$900	\$1000	\$1100	\$1200	\$1300	\$1400
-----------------	-------	-------	-------	-------	--------	--------	--------	--------	--------

SIDE HEIGHT	20' LONG	24' LONG	28' LONG	32' LONG	36' LONG	40' LONG	44' LONG	48' LONG	52' LONG
10' Tall	\$360	\$432	\$504	\$576	\$648	\$720	\$792	\$864	\$936
12' Tall	\$720	\$864	\$1008	\$1152	\$1296	\$1440	\$1584	\$1728	\$1872
14' Tall	\$1280	\$1536	\$1792	\$2048	\$2304	\$2560	\$2816	\$3072	\$3328
16' Tall	\$2040	\$2412	\$2784	\$3156	\$3528	\$3900	\$4272	\$4644	\$5016
18' Tall	\$2800	\$3200	\$3600	\$4000	\$4400	\$4800	\$5200	\$5600	\$6000
20' Tall	\$3160	\$3726	\$4292	\$4858	\$5424	\$5990	\$6556	\$7122	\$7688

BOTH SIDES CLOSED	20' LONG	24' LONG	28' LONG	32' LONG	36' LONG	40' LONG	44' LONG	48' LONG	52' LONG
8' Tall	\$860	\$1030	\$1200	\$1370	\$1540	\$1710	\$1880	\$2050	\$2220
10' Tall	\$980	\$1170	\$1360	\$1560	\$1750	\$1960	\$2150	\$2340	\$2530
12' Tall	\$1100	\$1320	\$1540	\$1760	\$1980	\$2200	\$2420	\$2640	\$2860
14' Tall	\$1220	\$1464	\$1708	\$1952	\$2196	\$2440	\$2684	\$2928	\$3172
16' Tall	\$1700	\$2040	\$2380	\$2720	\$3060	\$3400	\$3740	\$4080	\$4420
18' Tall	\$2060	\$2474	\$2884	\$3296	\$3708	\$4120	\$4532	\$4944	\$5356
20' Tall	\$2420	\$2904	\$3388	\$3872	\$4356	\$4840	\$5324	\$5808	\$6292

EACH END CLOSED	8' TALL	10' TALL	12' TALL	14' TALL	16' TALL	18' TALL	20' TALL
32' Wide	\$2295	\$2445	\$2595	\$2745	\$2895	\$3045	\$3195
34' Wide	\$2395	\$2545	\$2695	\$2845	\$2995	\$3145	\$3295
36' Wide	\$2495	\$2645	\$2795	\$2945	\$3095	\$3245	\$3395
38' Wide	\$2595	\$2745	\$2895	\$3045	\$3195	\$3345	\$3495
40' Wide	\$2695	\$2845	\$2995	\$3145	\$3295	\$3445	\$3595
42' Wide	\$2795	\$2945	\$3095	\$3245	\$3395	\$3545	\$3695
44' Wide	\$2895	\$3045	\$3195	\$3345	\$3495	\$3645	\$3795
46' Wide	\$2995	\$3145	\$3295	\$3445	\$3595	\$3745	\$3895
48' Wide	\$3095	\$3245	\$3395	\$3545	\$3695	\$3845	\$3995
50' Wide	\$3195	\$3345	\$3495	\$3645	\$3795	\$3945	\$4095
52' Wide	\$3295	\$3445	\$3595	\$3745	\$3895	\$4045	\$4195
54' Wide	\$3395	\$3545	\$3695	\$3845	\$3995	\$4145	\$4295
56' Wide	\$3495	\$3645	\$3795	\$3945	\$4095	\$4245	\$4395
58' Wide	\$3595	\$3745	\$3895	\$4045	\$4195	\$4345	\$4495
60' Wide	\$3695	\$3845	\$3995	\$4145	\$4295	\$4445	\$4595

Garage Doors

Uncertified			Certified	
White	Size	Color	White Only	
\$400	6' X 6'	\$500	6' X 6'	\$650
\$500	8' X 8'	\$600	8' X 8'	\$700
\$550	9' X 8'	\$650	9' X 8'	\$750
\$600	10' X 8'	\$700	10' X 8'	\$850
\$700	10' X 10'	\$800	10' X 10'	\$950
\$1300	*12' X 12'	\$1400	*12' X 12'	\$1800
\$2000	*14' X 14'	\$2100	*14' X 14'	\$2400
P. Gray-Brown-Green-B. Red-Beige			*16' X 16'	\$2600

Chain Hoist \$275.00 Each (*Included In Price)

Building must be 2' taller than garage door when installed on the side for certified garage doors or 12' x 12' and 14' x 14' uncertified.

Gable End

32' to 40' Wide \$500.00
42' to 50' Wide \$600.00
52' to 60' Wide \$750.00

Insulation

Double Bubble \$1.00/sq ft
Woven R-17 \$2.00/sq ft

Walk In Doors

36" X 80" \$225.00

Frameouts

45° Angle \$80.00
(Plus Frameout Charge)
Garage Door \$125.00

Window \$70.00
Walk-In Door \$85.00

Side Openings

With
Garage Door
\$225.00

Without
Garage Door
\$325.00

Windows Certified

200.00
30" X 36"

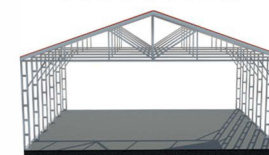


Side View



Up to Any Length

Front View



32' to 60' Wide

Blueprint

Call
For
Pricing